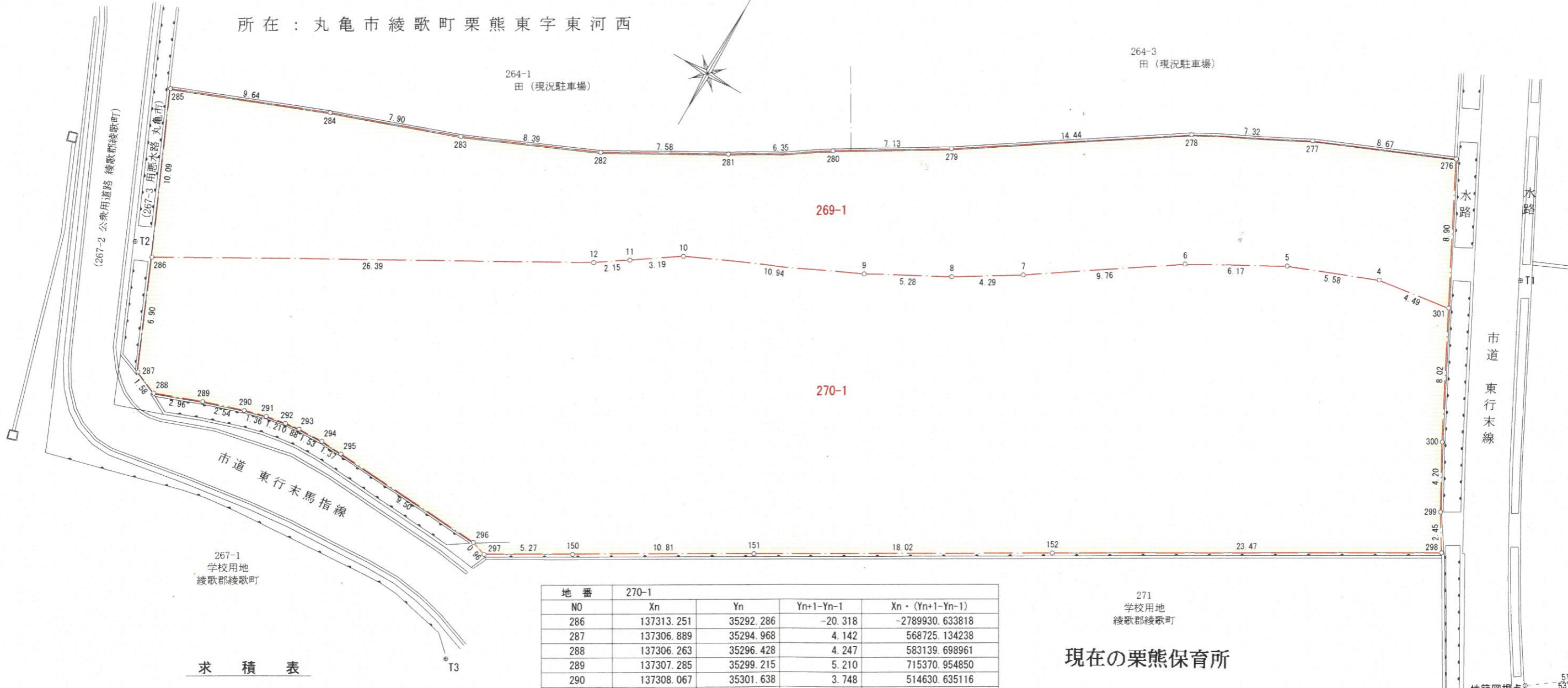


土地実測図

所在：丸亀市綾歌町栗熊東字東河西



求積表

地番	269-1			
NO	Xn	Yn	Yn+1-Yn-1	Xn · (Yn+1-Yn-1)
276	137357.541	35357.050	-12.072	-1658180.234952
277	137354.127	35349.070	-14.479	-1988750.404833
278	137350.756	35342.571	-18.553	-2548268.576068
279	137342.790	35330.517	-18.163	-2494557.094770
280	137339.108	35324.408	-11.511	-1580910.472188
281	137335.754	35319.006	-12.030	-1652149.120620
282	137332.068	35312.378	-14.320	-1966595.213760
283	137328.712	35304.686	-15.129	-2077646.083848
284	137326.031	35297.249	-16.416	-2254344.124896
285	137322.508	35288.270	-4.963	-681531.607204
286	137313.251	35292.286	27.016	3709654.789016
12	137326.195	35315.286	24.801	3405826.962195
11	137327.384	35317.087	4.450	611106.858800
10	137329.164	35319.736	12.599	1730210.137236
9	137333.714	35329.686	14.601	2005209.558114
8	137336.214	35334.337	8.311	1141401.274554
7	137338.463	35337.997	11.760	1615100.324880
6	137343.913	35346.097	13.500	1854142.825500
5	137346.913	35351.497	10.599	1455739.930887
4	137348.963	35356.696	9.645	1324730.748135
301	137349.627	35361.142	0.354	48621.767958
合計				-1187.755864
合計面積				593.8779320
地積				593.87 m ²

地番	270-1			
NO	Xn	Yn	Yn+1-Yn-1	Xn · (Yn+1-Yn-1)
286	137313.251	35292.286	-20.318	-2789930.633818
287	137306.889	35294.968	4.142	568725.134238
288	137306.263	35296.428	4.247	583139.698961
289	137307.285	35299.215	5.210	715370.954850
290	137308.067	35301.638	3.748	514630.635116
291	137308.415	35302.963	2.518	345742.588970
292	137308.622	35304.156	2.074	284778.082028
293	137308.732	35305.037	2.415	331600.587780
294	137308.783	35306.571	2.912	399843.176096
295	137308.711	35307.949	10.863	1491584.527593
296	137308.078	35317.434	10.407	1428965.167746
297	137307.780	35318.356	5.486	753270.481080
150	137310.434	35322.920	13.917	1910949.309978
151	137315.863	35332.273	24.927	3422872.517001
152	137324.935	35347.847	35.878	4926944.017930
298	137336.720	35368.151	19.011	2610908.383920
299	137338.809	35366.858	-3.314	-455140.813026
300	137342.500	35364.837	-5.716	-785049.730000
301	137349.627	35361.142	-8.141	-1118163.313407
4	137348.963	35356.696	-9.645	-1324730.748135
5	137346.913	35351.497	-10.599	-1455739.930887
6	137343.913	35346.097	-13.500	-1854142.825500
7	137338.463	35337.997	-11.760	-1615100.324880
8	137336.214	35334.337	-8.311	-1141401.274554
9	137333.714	35329.686	-14.601	-2005209.558114
10	137329.164	35319.736	-12.599	-1730210.137236
11	137327.384	35317.087	-4.450	-611106.858800
12	137326.195	35315.286	-24.801	-3405826.962195
合計				-2427.847265
合計面積				1213.9236325
地積				1213.92 m ²

現在の栗熊保育所

使用与点

点名	X座標	Y座標
地籍図根点HH221-2	137332.322	35376.468
地籍図根点HH222-7	137362.870	35417.638
準拠点T1	137353.217	35364.020
準拠点T2	137313.568	35290.951
準拠点T3	137301.199	35319.516